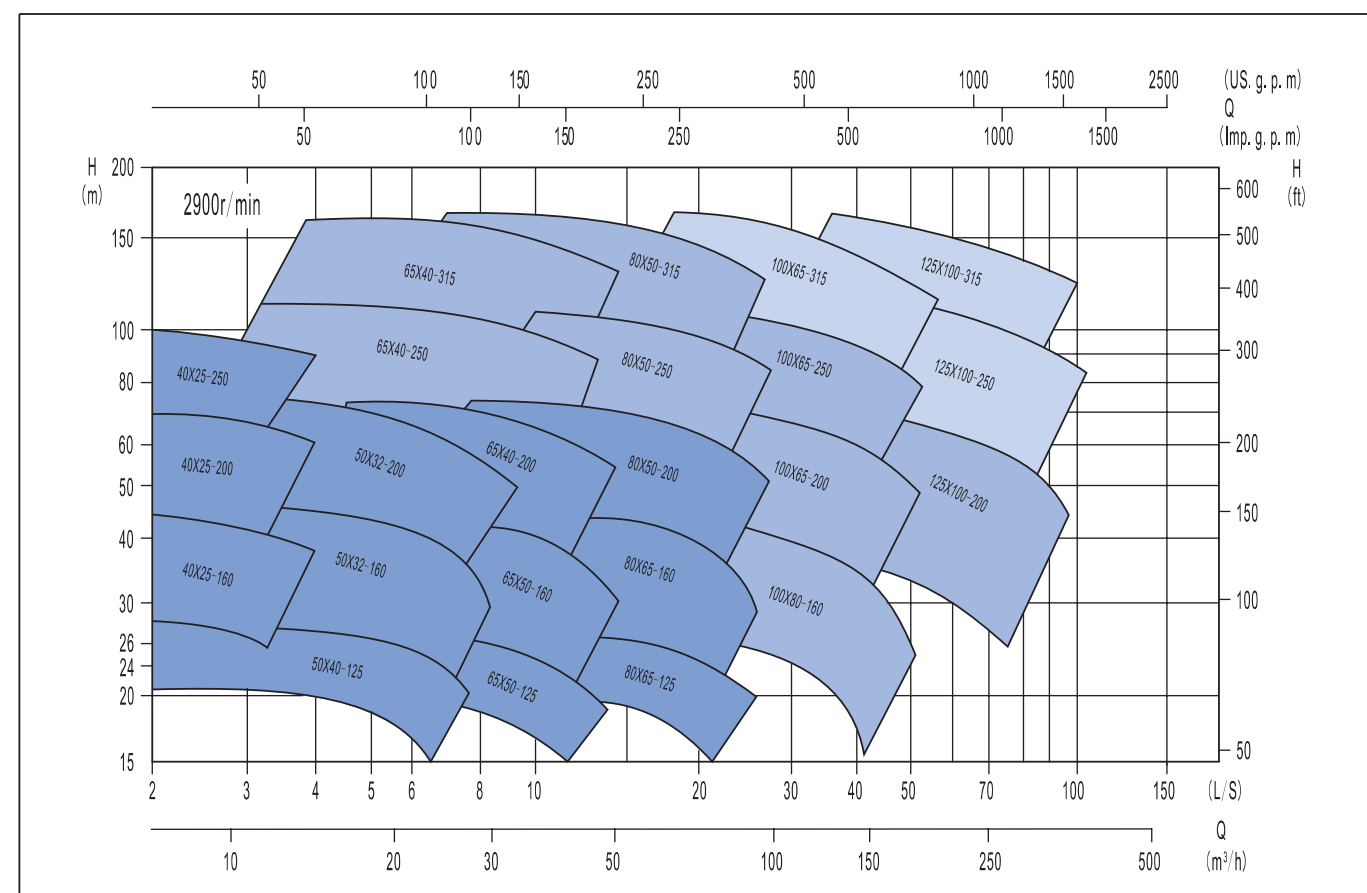
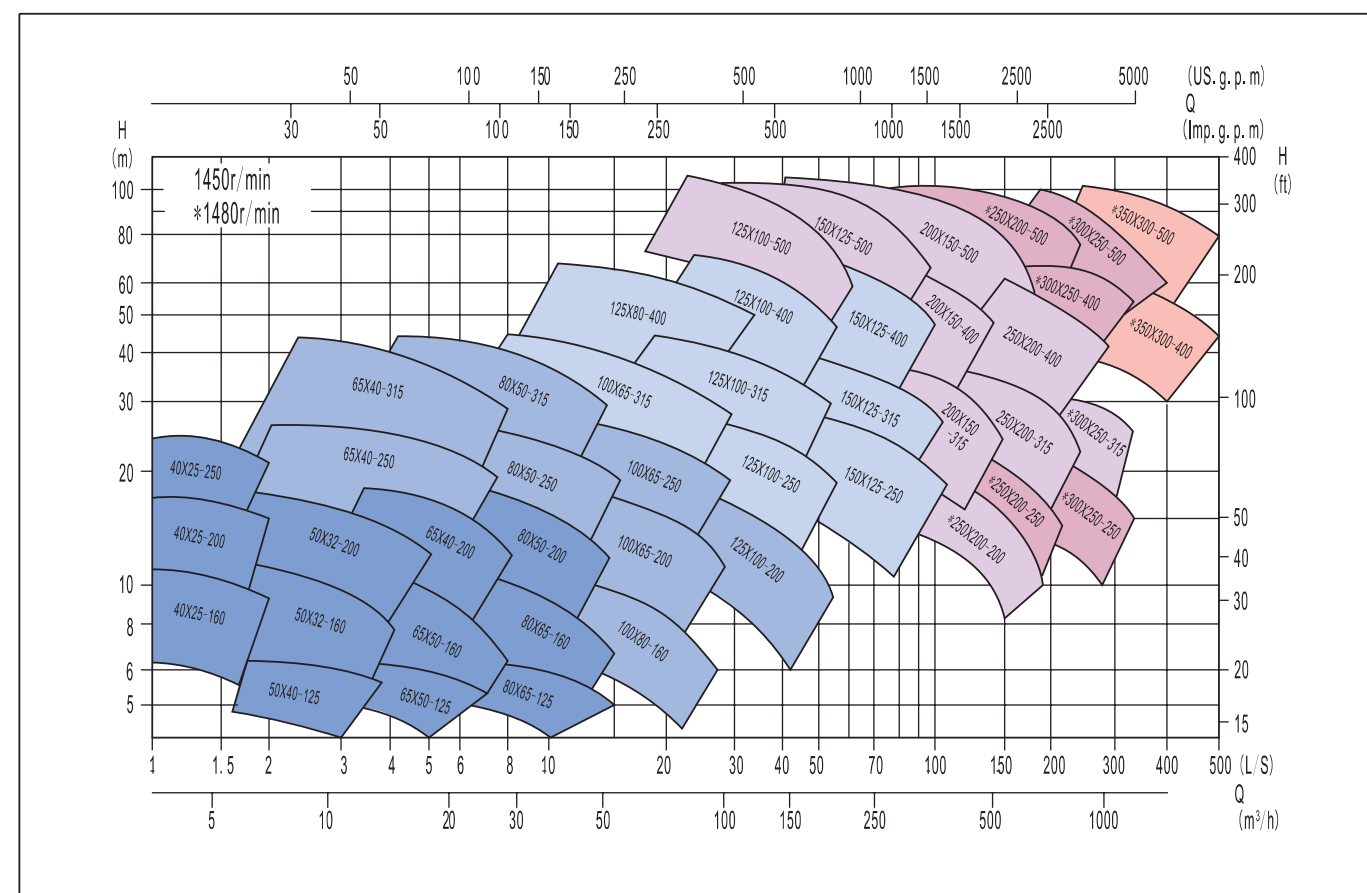
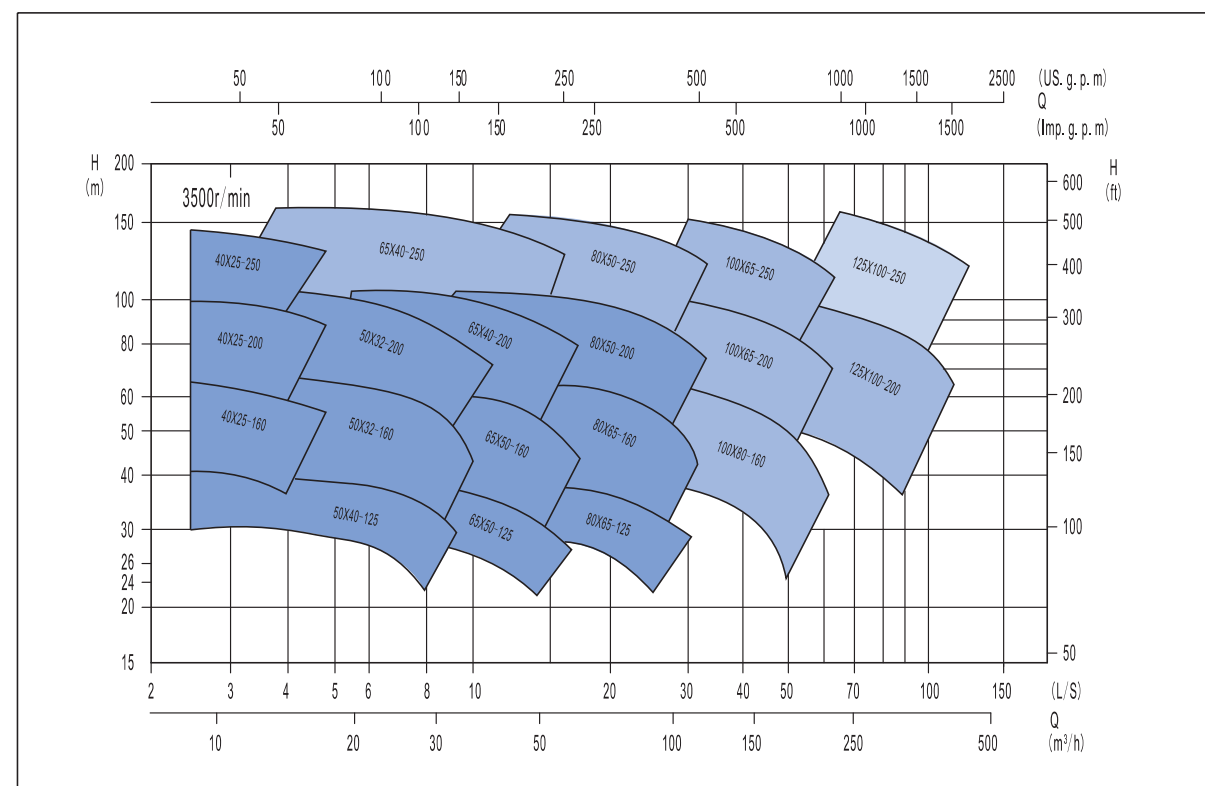
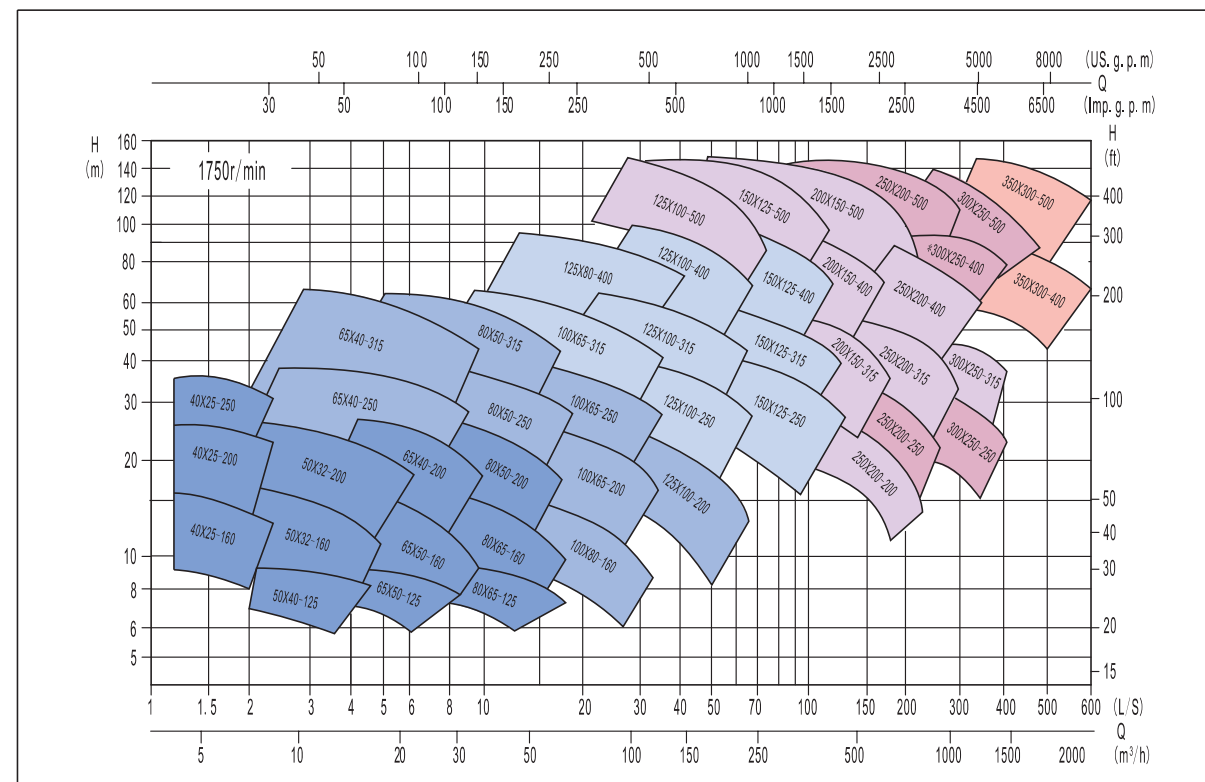


Performance Chart (50Hz)



Performance Chart (60Hz)



PARAGON PUMP (ASIA) PTE LTD
 37, Kallang Pudding Road, #08-08
 Tong Lee Building Block B, Singapore 349315
 Tel : 6841 2818 Fax : 6841 5988



**SINGLE STAGE
 BACK PULL-OUT END SUCTION
 CENTRIFUGAL PUMP: P-ISO**
 General Data



Construction

Horizontal single stage, end suction with vertical discharge. The "back pull out" design allows for the maintenance of the pump without disturbing the pipework connected to the casing, or the pump alignment.

The pump is built to the dimensional requirements of ISO 2858, Flanges are in accordance with EN 1092.

Application

The P-ISO centrifugal pump is suitable for handling water or similar liquids mainly used in the following

- Water Supply and Sewage
- Building Services
- Mining, Process Industries
- General, Food and Beverage Industries

Casing

Self-venting horizontal volute casing with horizontal end suction and vertical discharge. The suction nozzle has a vane to reduce prerotation.

Shaft

Tapered & keyed shaft design allowing ease of removal in maintenance & positive locking whilst in operation.

Bearings

Heavy duty NTN or approved equivalent. greased for life, reducing maintenance. Protected by a quality manufactured lip seal, reducing ingress of moisture or foreign particles. Bearing covers are designed for easy removable.

Bearing housing

Robust / heavy duty, manufactured in high strength cast iron providing trouble-free life complete with lifting provision and support foot.

Shaft seal

Single, high quality mechanical seal fitted as standard to all pumps. Different seals are possible on application.

Painting

Prior to painting, the pump is thoroughly cleaned of foreign material. The pump is then painted with a high quality/ undercoat/ primer and industrial enamel paint.

Operating Data --50Hz

Pump sizes	25mm to 350mm	
Flow	up to	540 L/s
Head	up to	160 m
Temperature	up to	120°C
Speed	up to	3600 rpm
Pressure	up to	24Bar

Accessories

Drive

The pump is only recommended for direct drive via a flexible spacer coupling. Spacer couplings enable the utilization of the back pull out feature

Where belt drives are necessary a separate jack (intermediate) shaft with bearings to carry the belt loads may be required.

All drive systems, where supplied by PARAGON PUMP are appropriately protected by suitable guards.

Pump Selection

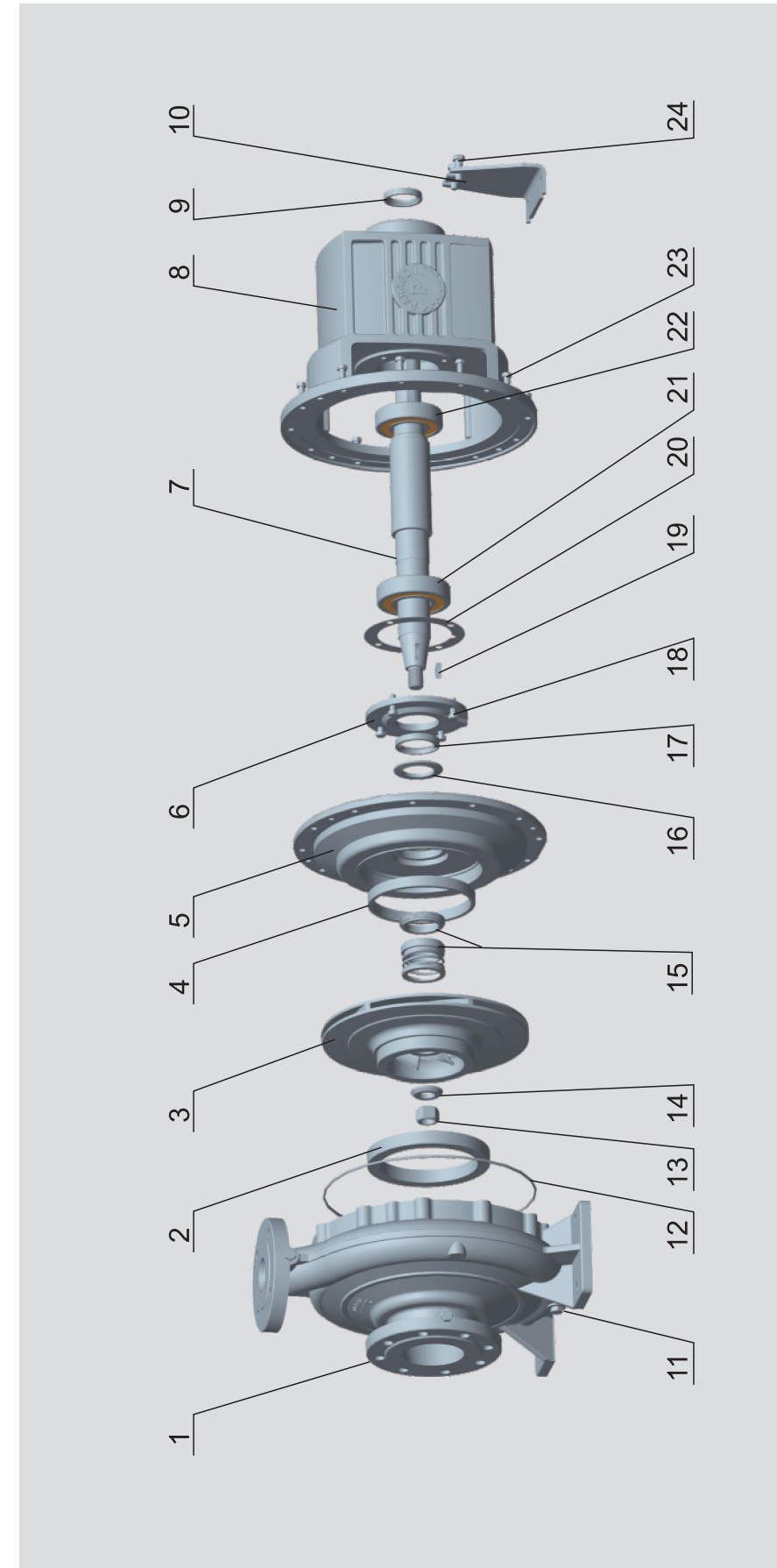
For pump selection the hydraulic performance curves should be used. These curves are based on water at 15°C and SG equal to 1.0.

NPSH values are indicated on the performance curves. At least 0.5m should be added as a safety margin

To overcome variations between actual and design requirements it is recommended that the driver power exceeds the absorbed pump shaft power.

Absorbed Pump Shaft kW	Driver Power Reserve
Up to 7.5	Approx. 20%
7.5~40	Approx. 15%
Above 40	Approx. 10%

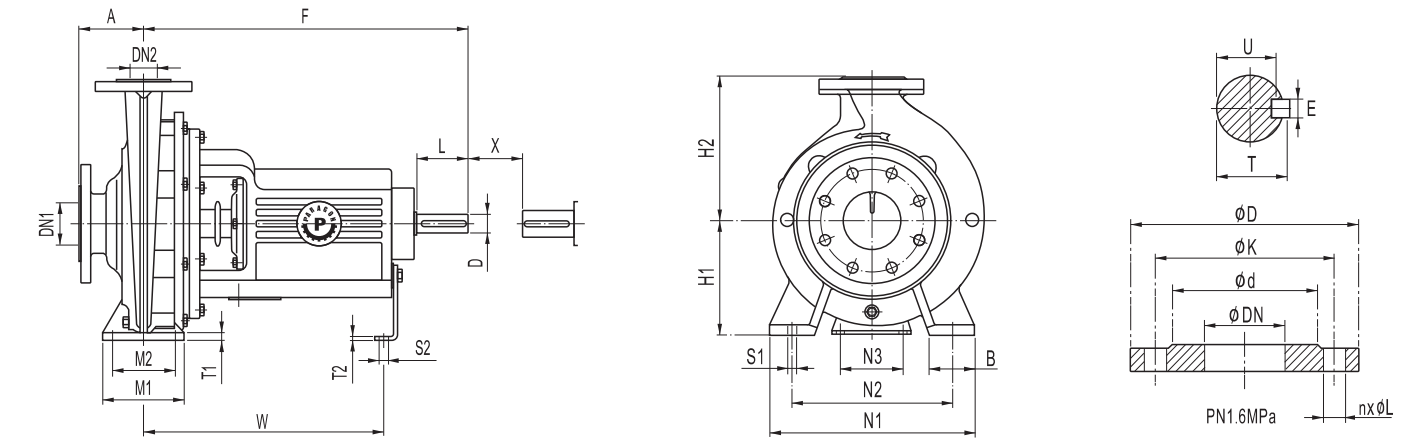
Section Drawing



Parts Name & Code

1	Casing	2	Front-wear ring	3	Impeller	4	Back-Wear Ring	5	Casing Cover	6	Bearing Cover	7	Shaft	8	Bearing Housing
9	Rear Oil Seal	10	Support Foot	11	Drainage plug & Washer	12	Casing O-Ring	13	Impeller Nut	14	Washer	15	Mechanical Seal	16	Slinger
17	Front Oil Seal	18	Bolt	19	Impeller Key	20	Gasket	21	Front-Bearing	22	Rear-Bearing	23	Bolt	24	Bolt

Dimensions Table



Pump Model	Shaft No.	Flange Size		Pump Dimensions								Foot Dimensions						Bolt Holes		Shaft End					Spacer	Net Weight
		DN1	DN2	A	F	H1	H2	B	M1	M2	N1	N2	N3	W	T1	T2	S1	S2	D	L	T	E	U	X		
40X25-160	1	40	25	80	385	132	160	50	100	70	240	190	110	285	10	6	M12	M12	24	50	27	8	20	100	38	
40X25-200	1	40	25	80	385	160	180	50	100	70	240	190	110	285	10	6	M12	M12	24	50	27	8	20	100	43	
40X25-250	1	40	25	100	385	180	225	50	125	95	320	250	110	285	10	6	M12	M12	24	50	27	8	20	100	62	
50X32-160	1	50	32	80	385	132	160	50	100	70	240	190	110	285	12	6	M12	M12	24	50	27	8	20	100	38	
50X32-200	1	50	32	80	385	160	180	50	100	70	240	190	110	285	12	6	M12	M12	24	50	27	8	20	100	46	
50X40-125	1	50	40	80	385	112	140	50	100	70	190	140	110	285	10	6	M12	M12	24	50	27	8	20	100	35	
65X40-200	1	65	40	100	385	160	180	50	100	70	265	212	110	285	13	6	M12	M12	24	50	27	8	20	100	48	
65X40-250	2	65	40	100	500	180	225	65	125	95	320	250	110	370	14	6	M12	M12	32	80	35	10	27	100	70	
65X40-315	2	65	40	125	500	200	250	65	125	95	345	280	110	370	16	6	M12	M12	32	80	35	10	27	100	80	
65X50-125	1	65	50	80	385	112	140	50	100	70	210	160	110	285	10	6	M12	M12	24	50	27	8	20	100	36	
65X50-160	1	65	50	80	385	132	160	50	100	70	240	190	110	285	11	6	M12	M12	24	50	27	8	20	100	40	
80X50-200	1	80	50	100	385	160	200	50	100	70	265	212	110	285	13	6	M12	M12	24	50	27	8	20	100	52	
80X50-250	2	80	50	125	500	180	225	65	125	95	320	250	110	370	15	6	M12	M12	32	80	35	10	27	100	72	
80X50-315	2	80	50	125	500	225	280	65	125	95	345	280	110	370	18	6	M12	M12	32	80	35	10	27	100	87	
80X65-125	1	80	65	100	385	132	160	50	100	70	240	190	110	285	11	6	M12	M12	24	50	27	8	20	100	38	
80X65-160	1	80	65	100	385	160	180	50	100	70	265	212	110	285	11	6	M12	M12	24	50	27	8	20	100	46	
100X65-200	2	100	65	100	500	180	225	65	125	95	320	250	110	370	14	6	M12	M12	32	80	35	10	27	140	70	
100X65-250	2	100	65	125	500	200	250	80	160	120	360	280	110	370	16	6	M16	M12	32	80	35	10	27	140	80	
100X65-315	3	100	65	125	530	225	280	80	160	120	400	315	110	370	18	6	M16	M12	42	110	45	12	37	140	118	
100X80-160	2	100	80	100	500	160	200	65	125	95	280	212	110	370	14	6	M12	M12	32	80	35	10	27	100	68	
125X80-400	3	125	80	125	530	280	355	80	160	120	435	355	110	370	20	6	M16	M12	42	110	45	12	37	140	165	
125X100-200	2	125	100	125	500	200	280	80	160	120	360	280	110	370	17	6	M16	M12	32	80	35	10	27	140	85	
125X100-250	3	125	100	140	530	225	280	80	160	120	400	315	110	370	18	6	M16	M12	42	110	45	12	37	140	126	
125X100-315	3	125	100	140	530	250	315	80	160	120	400	315	110	370	19	6	M16	M12	42	110	45	12	37	140	135	
125X100-400	3	125	100	140	530	280	355	100	200	150	500	400	110	370	20	6	M20	M12	42	110	45	12	37	140	175	
125X100-500	4	125	100	160	670	355	450	100	200	150	550	450	110	500	25	10	M20	M16	48	110	51.5	14	42.5	180	313	
150X125-250	3	150	125	140	530	250	355	80	160	120	400	315	110	370	19	6	M16	M12	42	110	45	12	37	140	140	
150X125-315	3	150	125	140	530	280	355	100	200	150	500	400	110	370	20	6	M20	M12	42	110	45	12	37	140	150	
150X125-400	3	150	125	140	530	315	400	100	200	150	500	400	110	370	21	6	M20	M12	42	110	45	12	37	140	186	
150X125-500	4	150	125	160	670	355	450	100	200	150	550	450	140	500	25	10	M20	M16	48	110	51.5	14	42.5	180	336	
200X150-315	4	200	150	160	670	315	400	100	200	150	550	450	140	500	25	10	M20	M16	48	110	51.5	14	42.5	180	222	
200X150-400	4	200	150	160	670	315	450	100	200	150	550	450	140	500	25	10	M20	M16	48	110	51.5	14	42.5	180	300	
200X150-500	4	200	150	160	670	400	500	100	200	150	550	450	140	500	25	10	M20	M16	48	110	51.5	14	42.5	180	382	
250X200-200	4	250	200	180	670	315	450	100	200	150	550	450	140	500	22	10	M20	M16	48	110	51.5	14	42.5	180	345	
250X200-250	5	250	200	180	885	315	450	100	200	150	550	450	180	670	25	12	M24	M16	65	140	69	18	58	250	490	
250X200-315	4	250	200	180	670	315	450	100	200	150	550	450	140	500	25	10	M20	M16	48	110	51.5	14	42.5	180	277	
250X200-400	4	250	200	180	670	355	500	100	200	150	550	450	140	500	25	10	M20	M16	48	110	51.5	14	42.5	180	340	
250X200-500	5	250	200	225	885	400	580	150	315	250	760	630	180	670	28	12	M24	M16	65	140	69	18	58	250	495	
300X250-250	5	300	250	225	885	355	560	125	250	190	630	500	180	670	24	12	M24	M16	65	140	69	18	58	250	360	
300X250-315	4	300	250	225	670	355	500	125	250	190	690	560	180	500	24	12	M20	M16	48	110	51.5	14	42.5	180	350	
300X250-400	5	300	250	225	885	450	560	150	250	190	690	560	180	670	28	12	M24	M16	65	140	69	18	58	250	480	
300X250-500	5	300	250	225	885	450	630	150	315	250	760	630	180	670	28	12	M24	M16	65	140	69	18	58	250	530	
350X300-400	6	350	300	250	975	450	600	180	315	250	760	630	180	730	24	12	M24	M16	75	170	79.5	20	67.5	250	900	
350X300-500	6	350	300	250	975	500	650	225	360	270	900	750	180	730	32	12	M30	M16	75	170	79.5	20	67.5	250	1100	

Standard flange: GB/T 17241.6-1998(ISO7005.2:1988), PN 1.6MPa

DN	25	32	40	50	65	80	100	125	150	200	250	300	350
ø d	65	76	84	99									